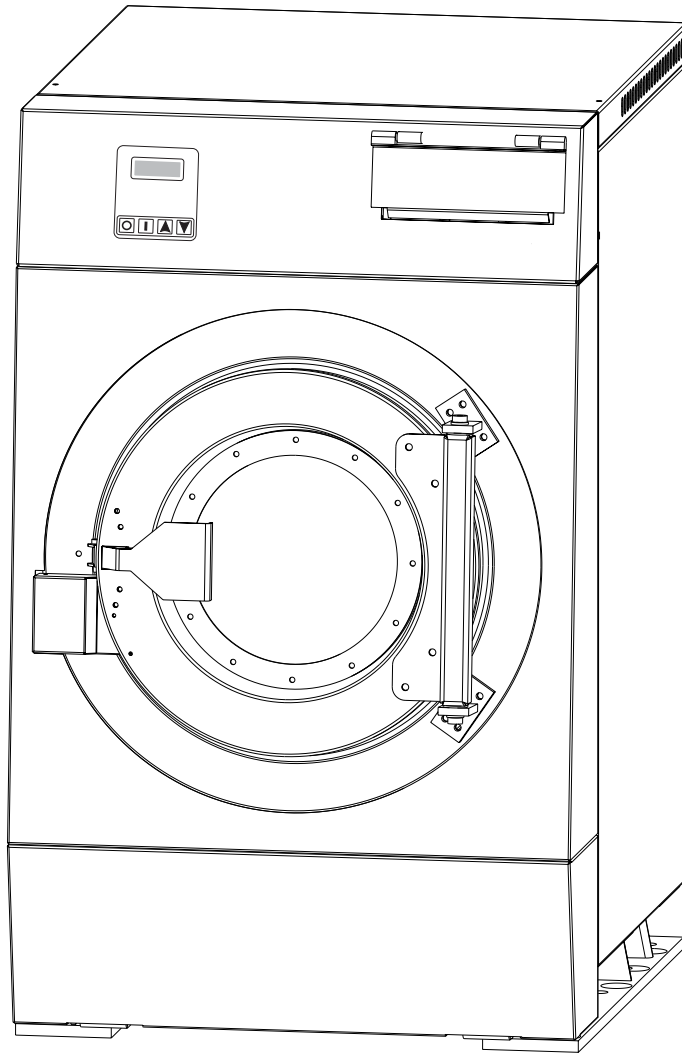


# Washer-Extractor

## HE Series Spare Parts Manual



**B&C Technologies**

Panama City, FL  
(850) 249-2222  
(850) 249-2226 FAX  
[www.bandctech.com](http://www.bandctech.com)

Revision 2.5  
27-May-2014



Table of Contents	Ordering Information	4
	Name Plate Location	4
	Model Identification	5
	Decals and Locations	6
	Door Assembly	8
	Door Hinge Assembly	10
	Door Lock Assembly	12
	Door Handle Assembly	14
	HE-30 Rear Panel	16
	HE-40/60 Rear Panel	18
	HE-80/100 Rear Panel	20
	Rear Control Enclosure	22
	Cabinet Assembly	24
	Supply Dispenser	26
	Control Enclosure	28
	Front Main Assembly	30
	Rear Main Assembly	32
	Steam Injection Assembly	34
	HE-30 Bearing Assembly	36
	HE-40/60 Bearing Assembly	38
	HE-60 CARB Bearing Assy	40
	HE-80/100 Bearing Assembly	42

## B&C Technologies

Panama City, FL

(850) 249-2222

(850) 249-2226 FAX

[www.bandctech.com](http://www.bandctech.com)

# Washer-Extractor

## Parts Ordering Information

If you require literature or spare parts, please contact your local distributor.

If a local distributor is unavailable, you may contact B&C Technologies directly at (850) 249-2222 for the name of your nearest parts dealer.

For technical assistance, contact B&C Technologies:

(850) 249-2222 Phone

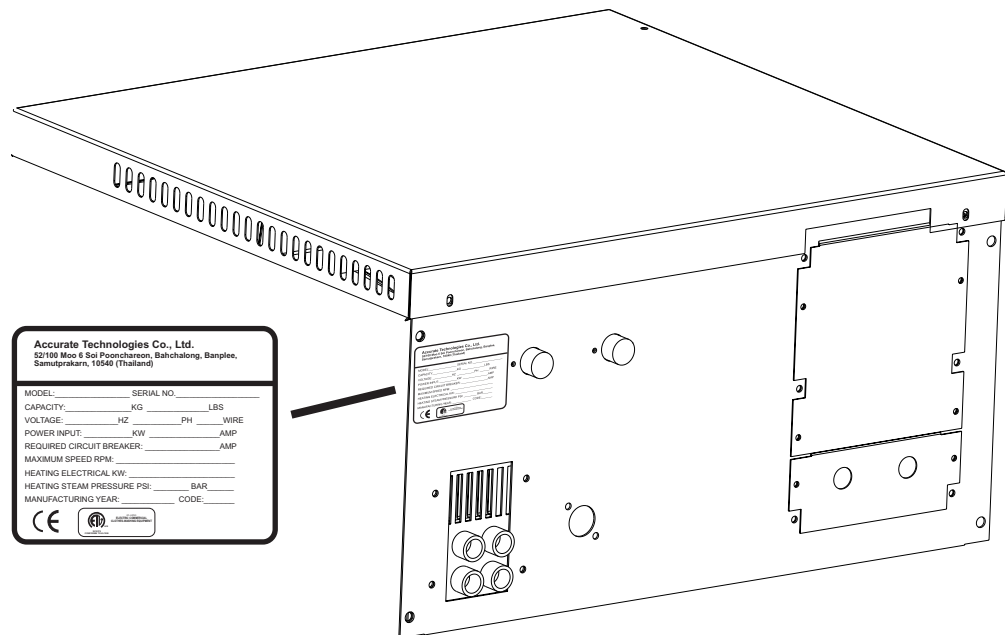
(850) 249-2226 FAX

parts@bandctech.com

www.bandctech.com

## Nameplate Location

When contacting B&C about your equipment, please make note of the model and serial number, located on the nameplate as shown below, and also located inside the door at the top.



# Washer-Extractor

## Model Identification

Information contained in the manual  
is for the following machine(s).

HE-30/35

HE-40/45

HE-60/65

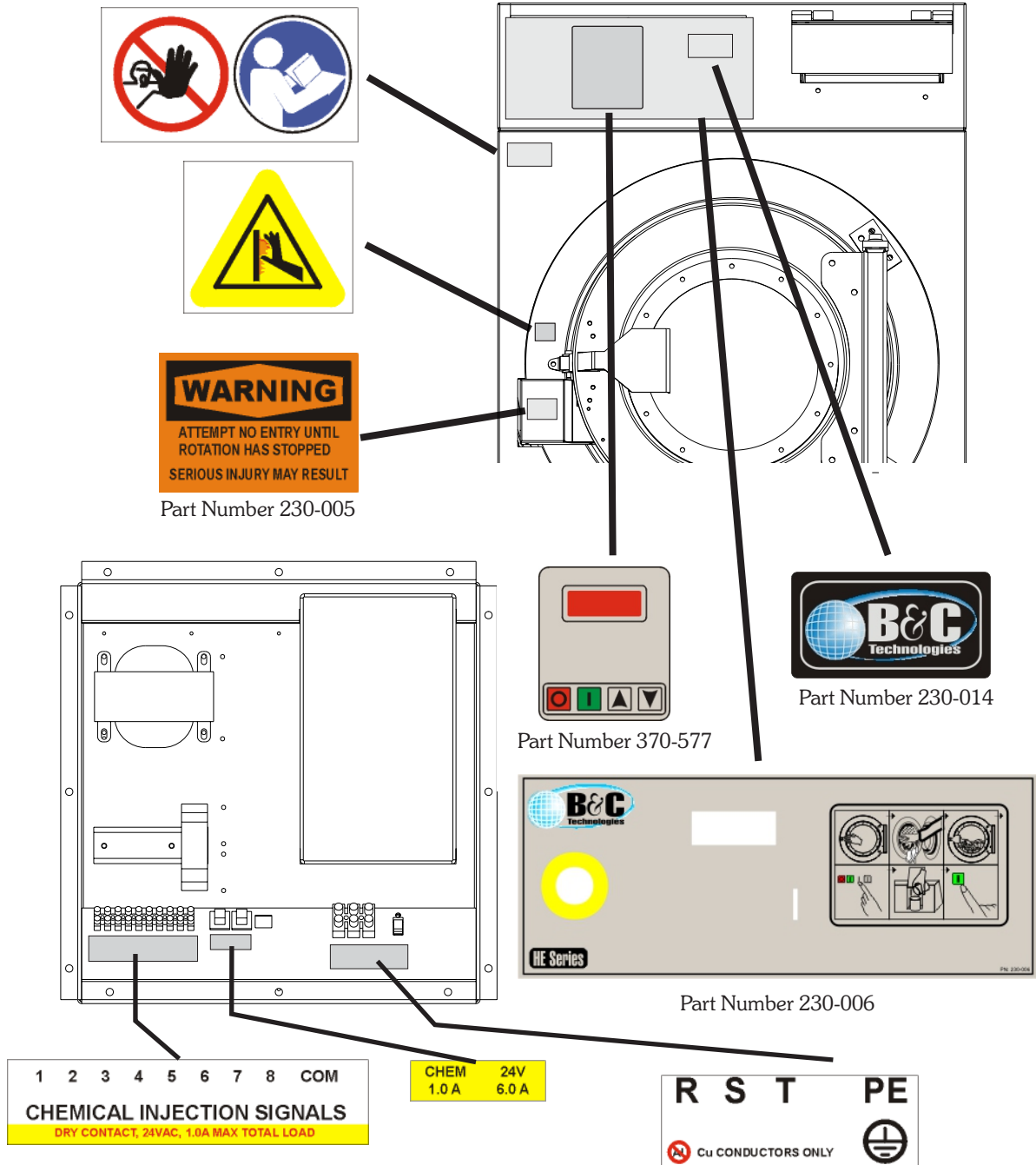
HE-80/85

HE-100/110

# Washer-Extractor

## Decal Information

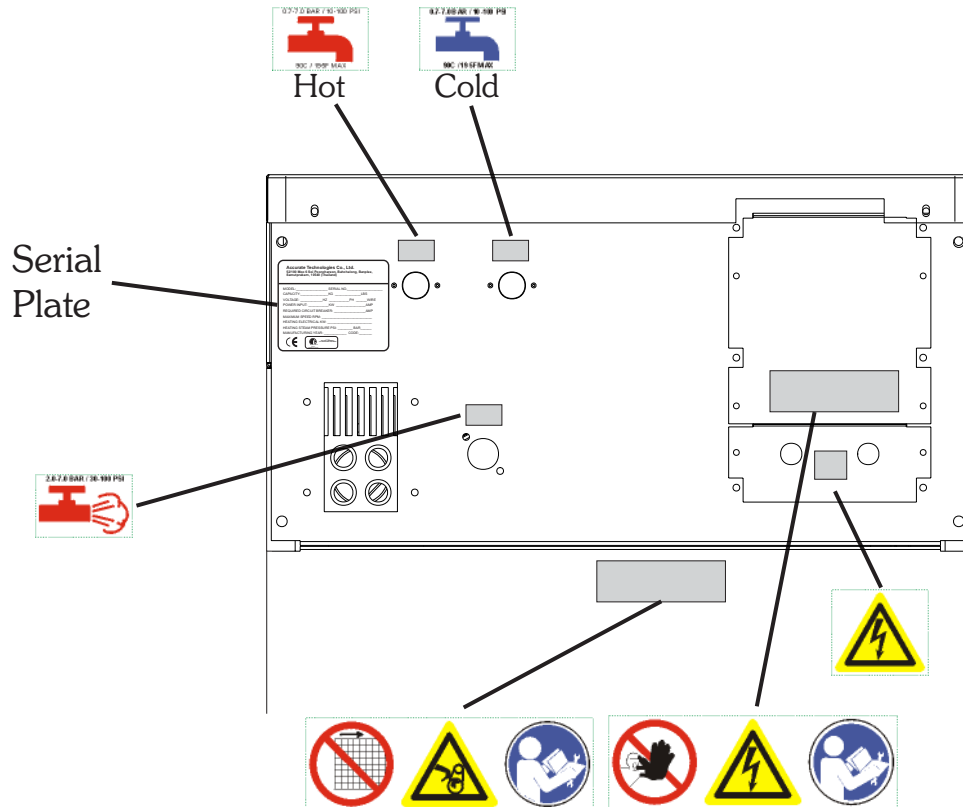
Note: Unless otherwise indicated, decals are all contained on a single sheet. Part number: 230-002



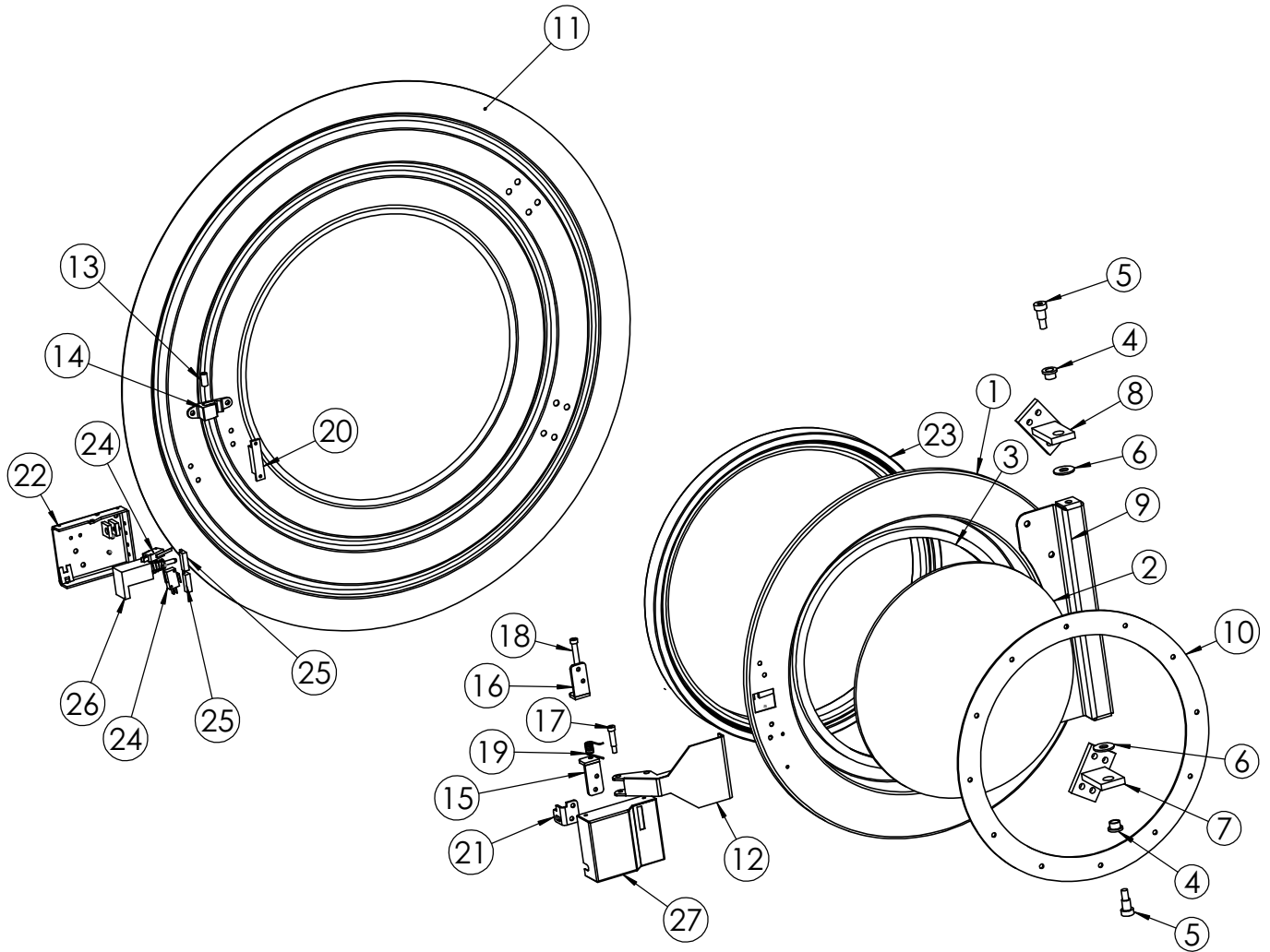
# Washer-Extractor

## Decal Information

Note: Unless otherwise indicated, decals are all contained on a single sheet. Part number: 230-002



# Door Assembly

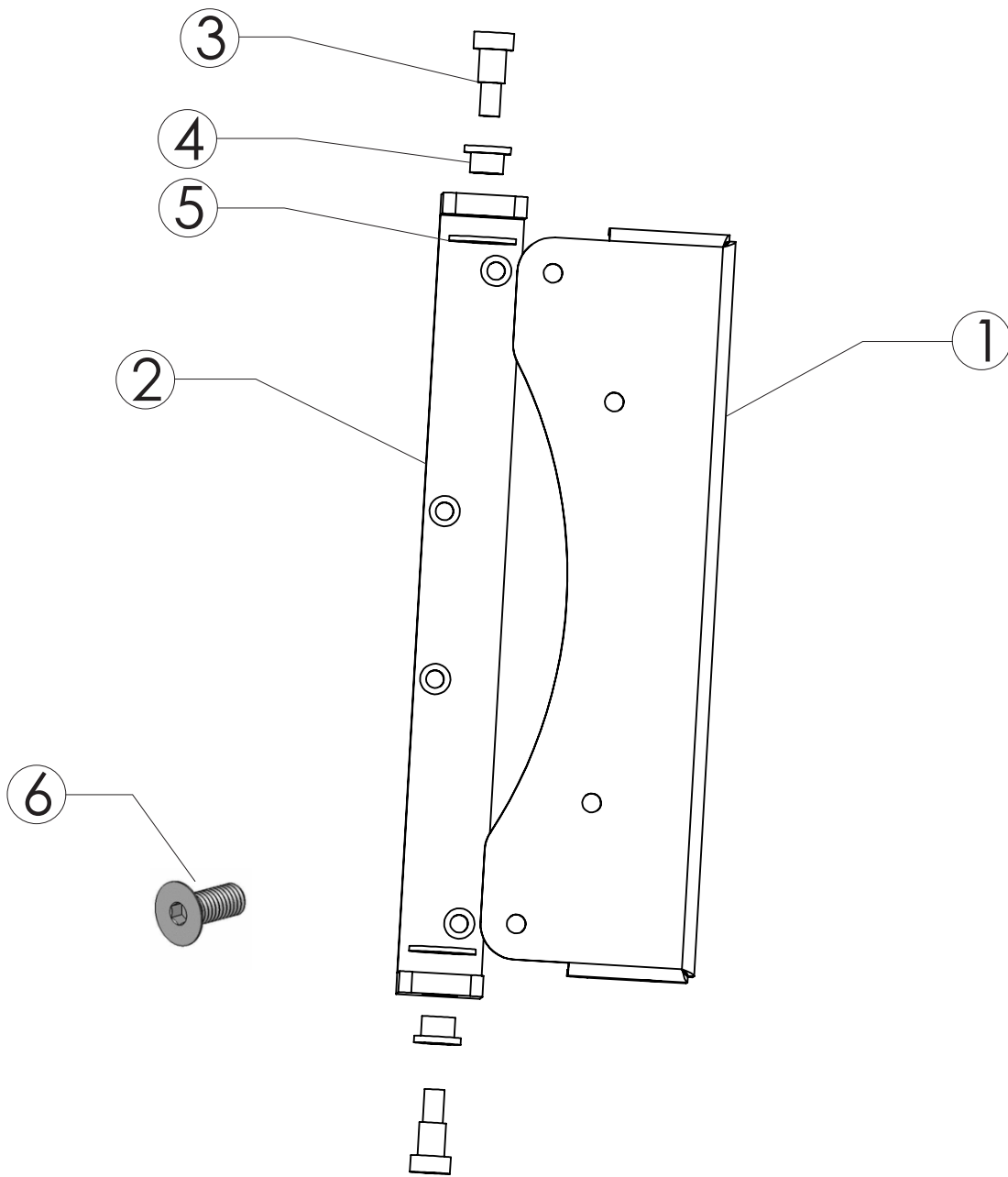




# Door Assembly

Item	Machine					Description
	HE-30/35	HE-40/45	HE-60/65	HE-80/85	HE-100/110	
1	600-139	600-139	600-002	600-188	600-188	Door Ring
2	290-001	290-001	600-039	600-189	600-189	DoorGlass
3	170-001	170-001	600-045	600-191	600-191	Door Glass Gasket
4	430-001	430-001	430-001	430-001	430-001	Door Hinge Bushing
5	430-002	430-002	430-002	430-002	430-002	Door Hinge Bolt
6	430-003	430-003	430-003	430-003	430-003	Door Hinge Washer
7	600-040	600-040	600-040	600-040	600-040	Hinge Bracket, Bottom
8	600-041	600-041	600-041	600-041	600-041	Hinge Bracket, Top
9	600-140	600-140	600-042	600-190	600-190	Door Hinge (Old Style)
9	600-478	600-478	600-473	600-481	600-481	Door Hinge (New Style)
10	600-141	600-141	600-046	600-192	600-192	Door Glass Retainer
11	600-399	600-769	600-324	600-707	600-707	Shell Front
12	600-109	600-109	600-109	600-109	600-109	Door Handle Assembly
13	430-006	430-006	430-006	430-006	430-006	Door Lock Bushing
14	600-097	600-097	600-097	600-097	600-097	Door Lock Block
15	600-102	600-102	600-102	600-102	600-102	Door Handle Bracket Bottom
16	600-101	600-101	600-101	600-101	600-101	Door Handle Bracket Top
17	430-007	430-007	430-007	430-007	430-007	Door Lock Bolt
18	430-008	430-008	430-008	430-008	430-008	Door Handle Bolt
19	600-153	600-153	600-153	600-153	600-153	Door Handle Spring
20	340-703	340-703	340-703	340-703	340-703	Magnet
21	600-103	600-103	600-103	600-103	600-103	Door Lock Bar
22	600-108	600-108	600-108	600-108	600-108	Door Lock Plate Assembly
23	600-340	600-340	600-194	600-193	600-193	Door Gasket
24	340-001	340-001	340-001	340-001	340-001	Door Lock Switch
25	HAM-702	HAM-702	HAM-702	HAM-702	HAM-702	Magnetic Reed Switch
26	300-001	300-001	300-001	300-001	300-001	Door Lock Solenoid (Old Style)
	300-125	300-125	300-125	300-125	300-125	Door Lock Solenoid, Mag Latch (New Style)
27	600-107	600-107	600-107	600-107	600-107	Door Lock Cover

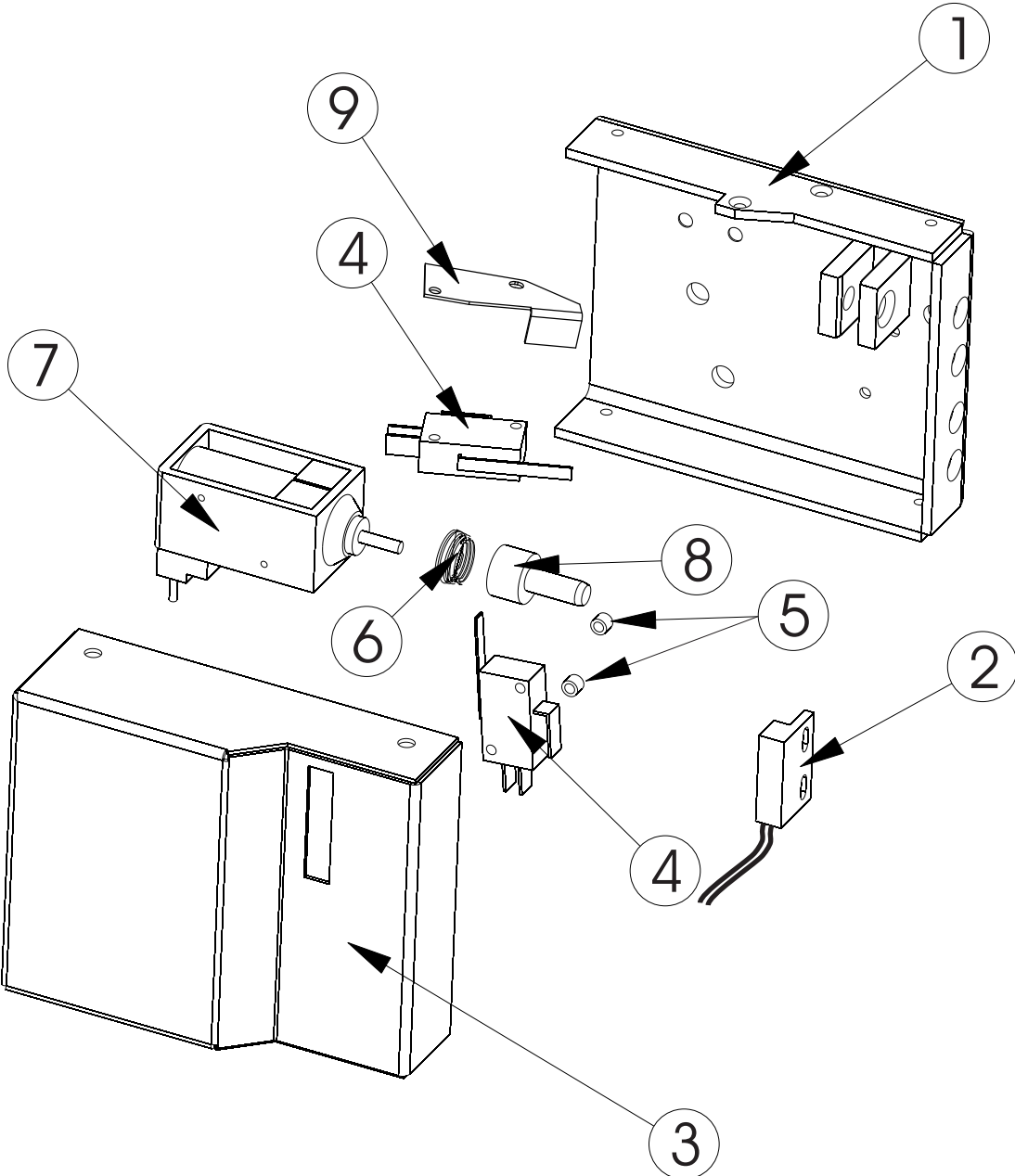
# New Style Door Hinge



# New Style Door Hinge

ITEM NO.	QTY	PART NUMBER			DESCRIPTION
		HE-30/35/40/45	HE-60/65	HE-80/85/100/110	
1	1	600-478	600-473	600-481	DOOR HINGE
2	1	600-474	600-474	600-474	DOOR HINGE BRACKET
3	2	430-002	430-002	430-002	DOOR HINGE BOLT
4	2	430-001	430-001	430-001	DOOR HINGE BUSHING
5	2	430-003	430-003	430-003	DOOR HINGE WASHER
6	4	430-106	430-106	430-106	DOOR HINGE MOUNTING SCREW

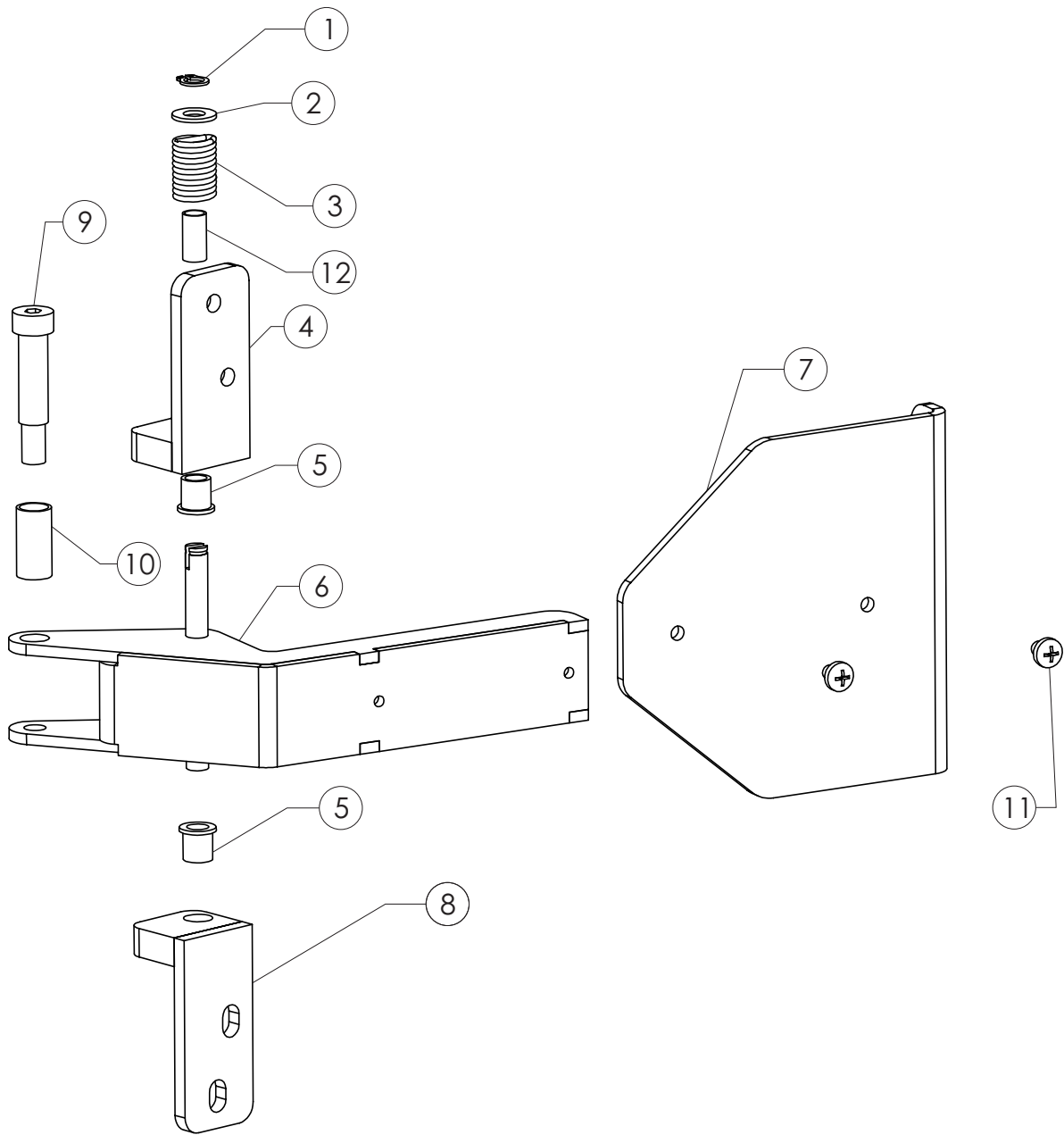
# Magnetic Latching Door Lock



# Magnetic Latching Door Lock

ITEM NO.	QTY	PART NUMBER	DESCRIPTION
	1	600-108	Door Lock Plate Assembly, Complete
1	1	600-105	Door Lock Plate
2	1	HAM-702	Switch, Magnetic Reed
3	1	600-107	Door Lock Cover
4	2	340-001	Door Lock Switch
5	2	430-005	Standoff, Nylon
6	1	310-001	Spring, Door Solenoid
7	1	300-125	Solenoid, Mag-Latch
8	1	600-150	Door Locking Pin
9	1	600-932	Overtravel Switch Stop
Not Shown	1	370-501	Board, Door Lock, Mag-Latch

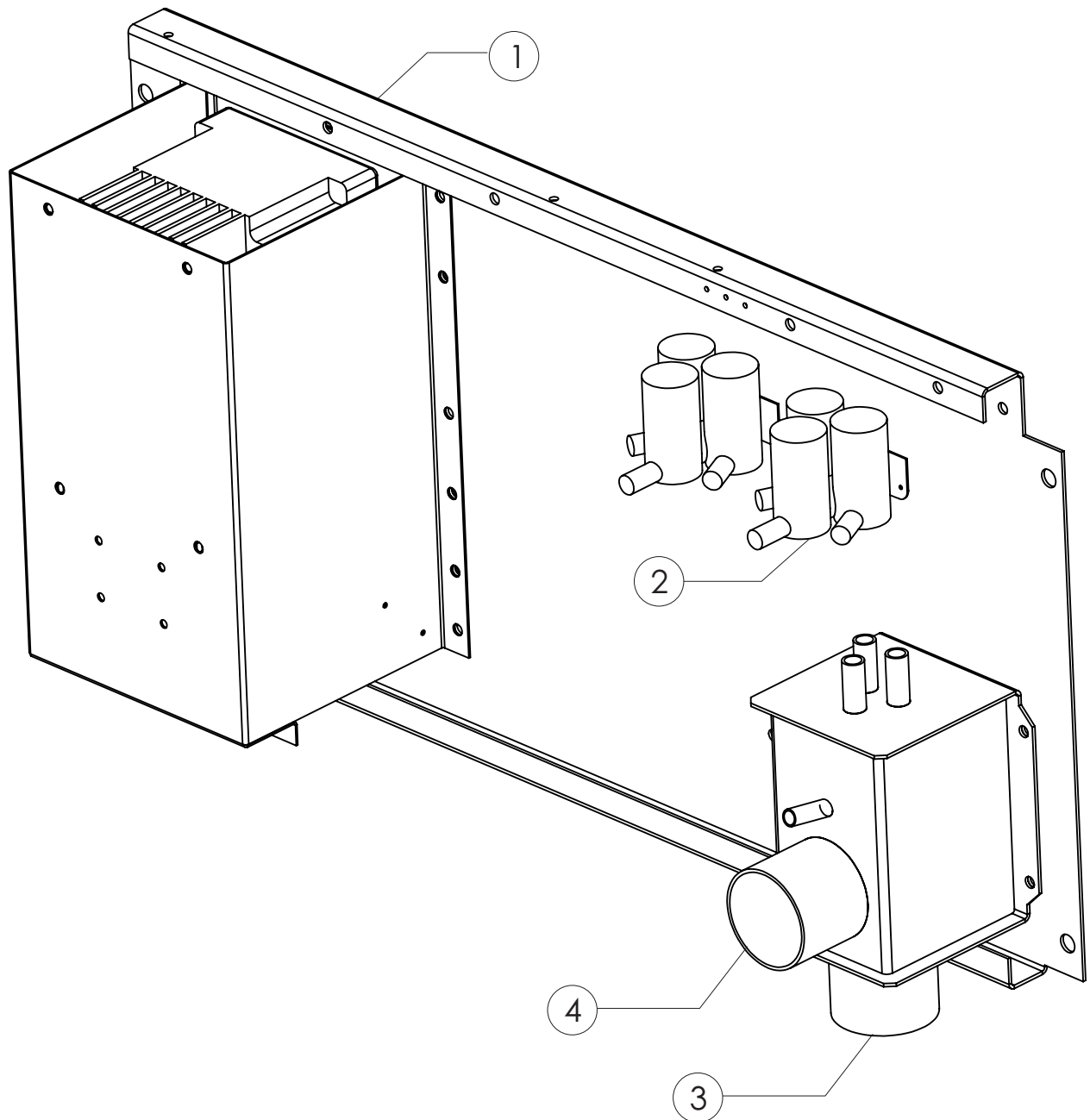
# Door Handle Assembly



# Door Handle Assembly

ITEM NO.	QTY	PART NUMBER	DESCRIPTION
	1	600-109	Assembly, Door Handle Complete
1	1	600-786	External Retaining Ring
2	1	600-787	Washer
3	1	600-785	Door Handle Spring
4	1	600-101	Top Door Handle Hinge
5	2	600-799	Door Handle Bushing
6	1	600-793	Door Handle Base
7	1	600-794	Door Handle Paddle
8	1	600-102	Bottom Door Handle Hinge
9	1	430-007	Door Lock Bolt
10	1	430-006	Door Lock Bushing
11	2	430-048	Screw, Handle to Base
12	1	601-023	Bushing, Anti-rattle

# HE-30/35 Rear Panel

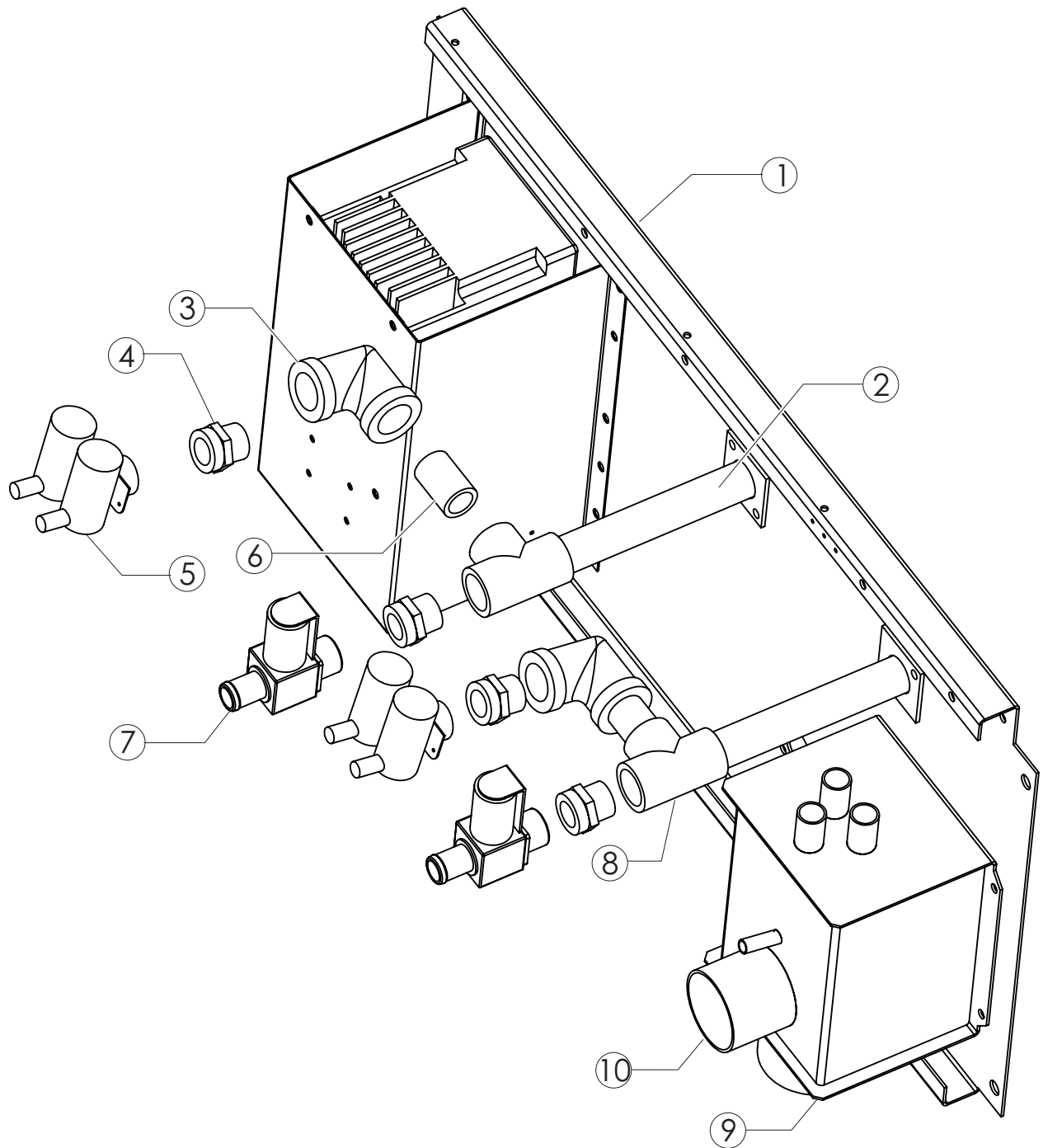




# HE-30/35 Rear Panel

ITEM NO.	QTY.	PART NUMBER	DESCRIPTION
		HE-30/35	
1	1	600-413	Rear Panel
2	2	381-296	3 way valve
3	1	600-414	Vacuum Breaker
4	1	150-400	Chemical Hose

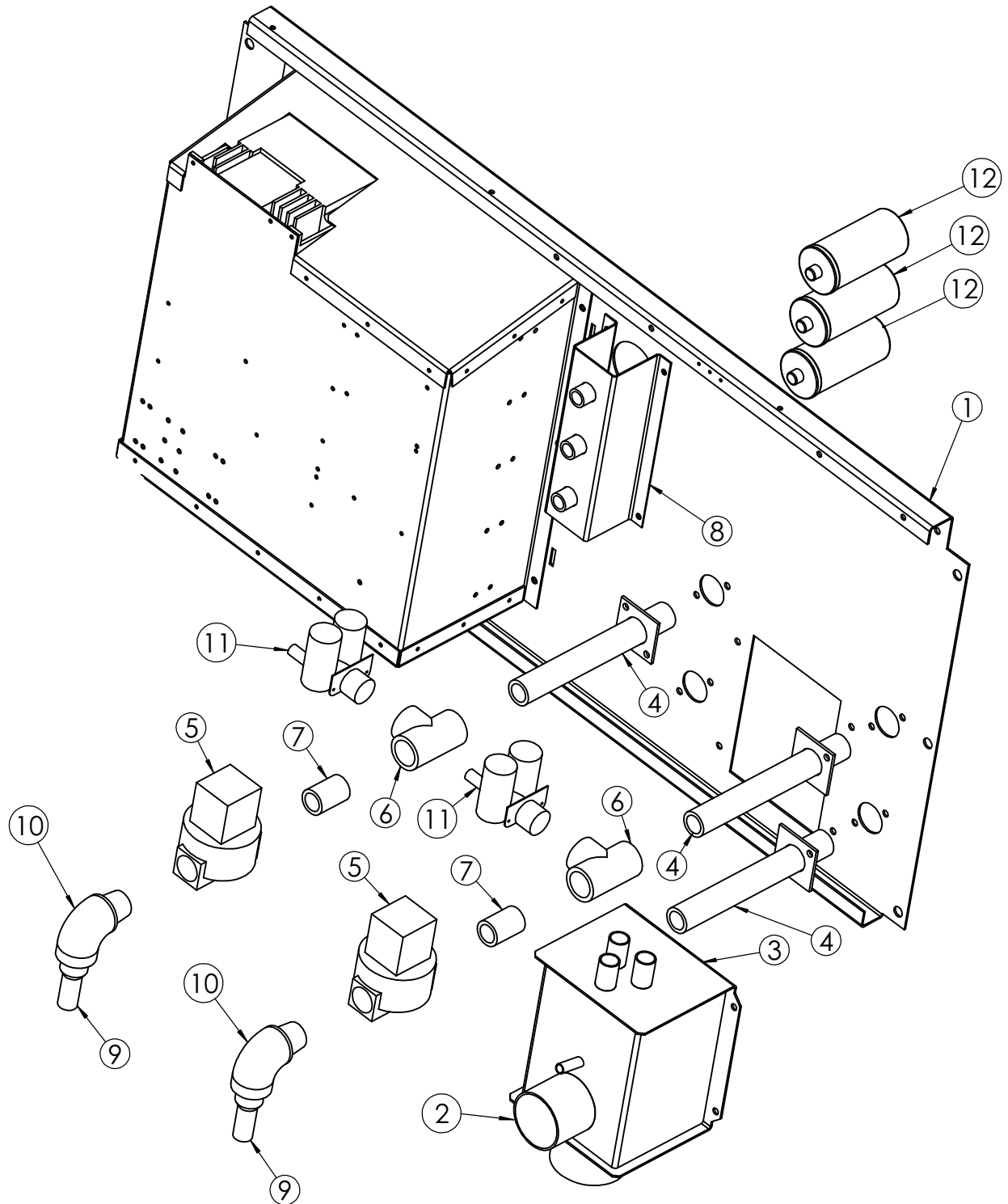
# HE-40/45/60/65 Rear Panel



# HE-40/45/60/65 Rear Panel

ITEM NO.	QTY.	PART NUMBER		DESCRIPTION
		HE-40/45	HE-60/65	
1	1	600-783	600-331	Rear Panel
2	2	600-079	600-079	Inlet Pipe Weldment
3	2	420-012	420-012	Elbow
4	3	420-013	420-013	Brass Adapter
5	2	381-295	381-295	2 way valve
6	2	420-010	420-010	3/4 Inch Nipple
7	2	380-071	380-071	Valve, Water, 3/4 Inch
8	1	420-004	420-004	Tee, Galvanized
9	2	600-063	600-063	Vacuum Breaker
10	1	150-400	150-400	Chemical Hose
Not Shown	2	AKM-939	AKM-939	Repair kit for 3/4 Water Valve (380-071)
Not Shown	1		600-082	Grease Box Weldment, CARB Bearings
Not Shown	3		SKF-204	Autolubricators, CARB (Optional)

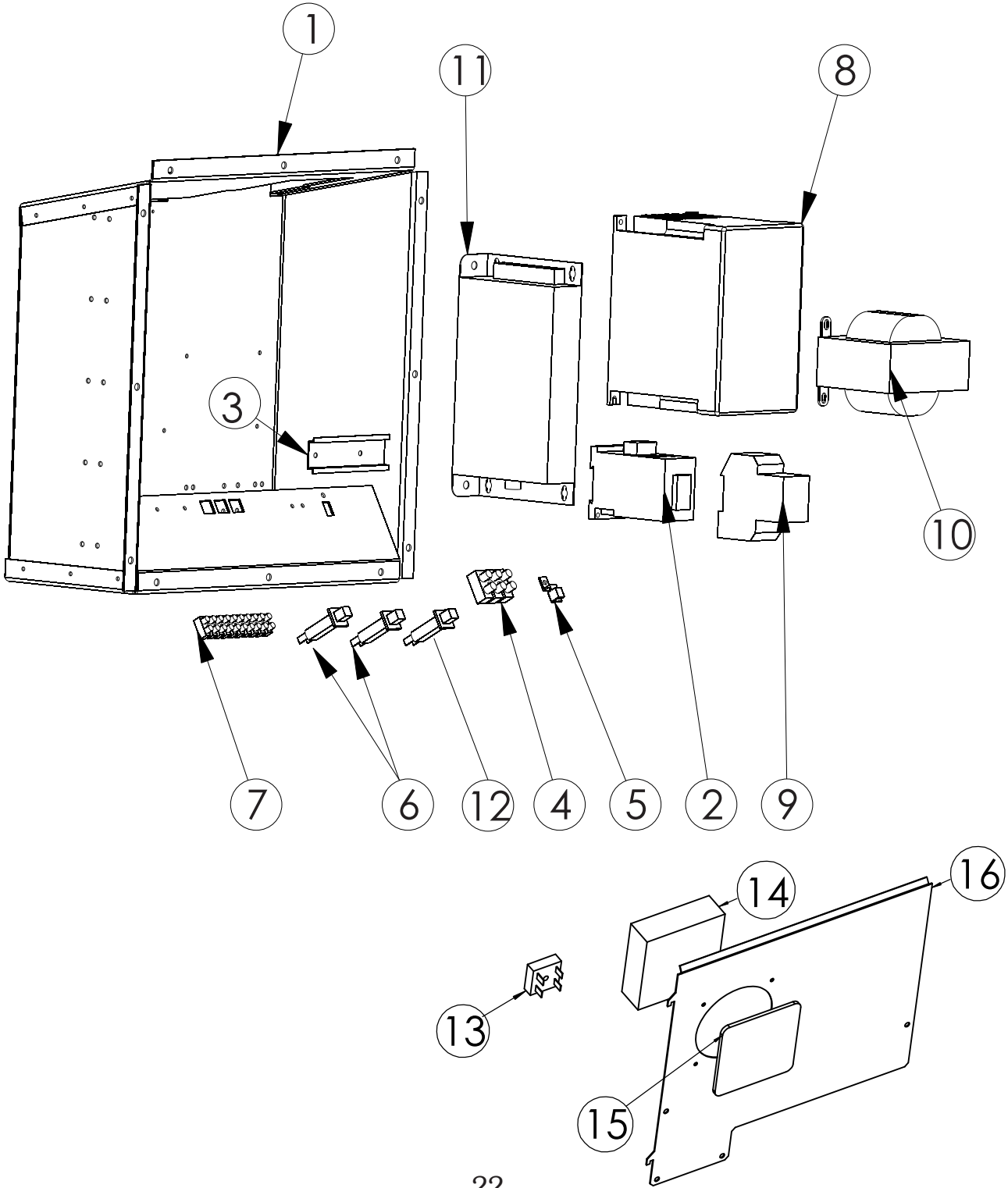
# HE-80/85/100/110 Rear Panel



# HE-80/85/100/110 Rear Panel

ITEM NO.	QTY.	PART NUMBER		DESCRIPTION
		HE-80/85	HE-100/110	
1	1	600-747	600-747	Rear Panel
2	1	150-400	150-400	Chemical Hose
3	1	600-063	600-211	Vacuum Breaker
4	3	600-079	600-210	Inlet Pipe Weldment
5	2	381-707	PAR-003	Valve, Water, DIN coil
6	2	420-004	420-006	Tee, Galvanized
7	2	420-010	420-005	Close Nipple, Galvanized
8	1	600-082	600-082	Grease Connection Box Weldment
9	2	420-011	420-008	Hose Nipple, Brass
10	2	420-012	420-007	Elbow, Street, Galv.
11	1	381-722	381-722	2-way valve, 24VAC
12	3	SKF-204	SKF-204	Auto Lubricator (Optional)
Not Shown	2	PAR-991	PAR-005	Repair kit for Water Valve

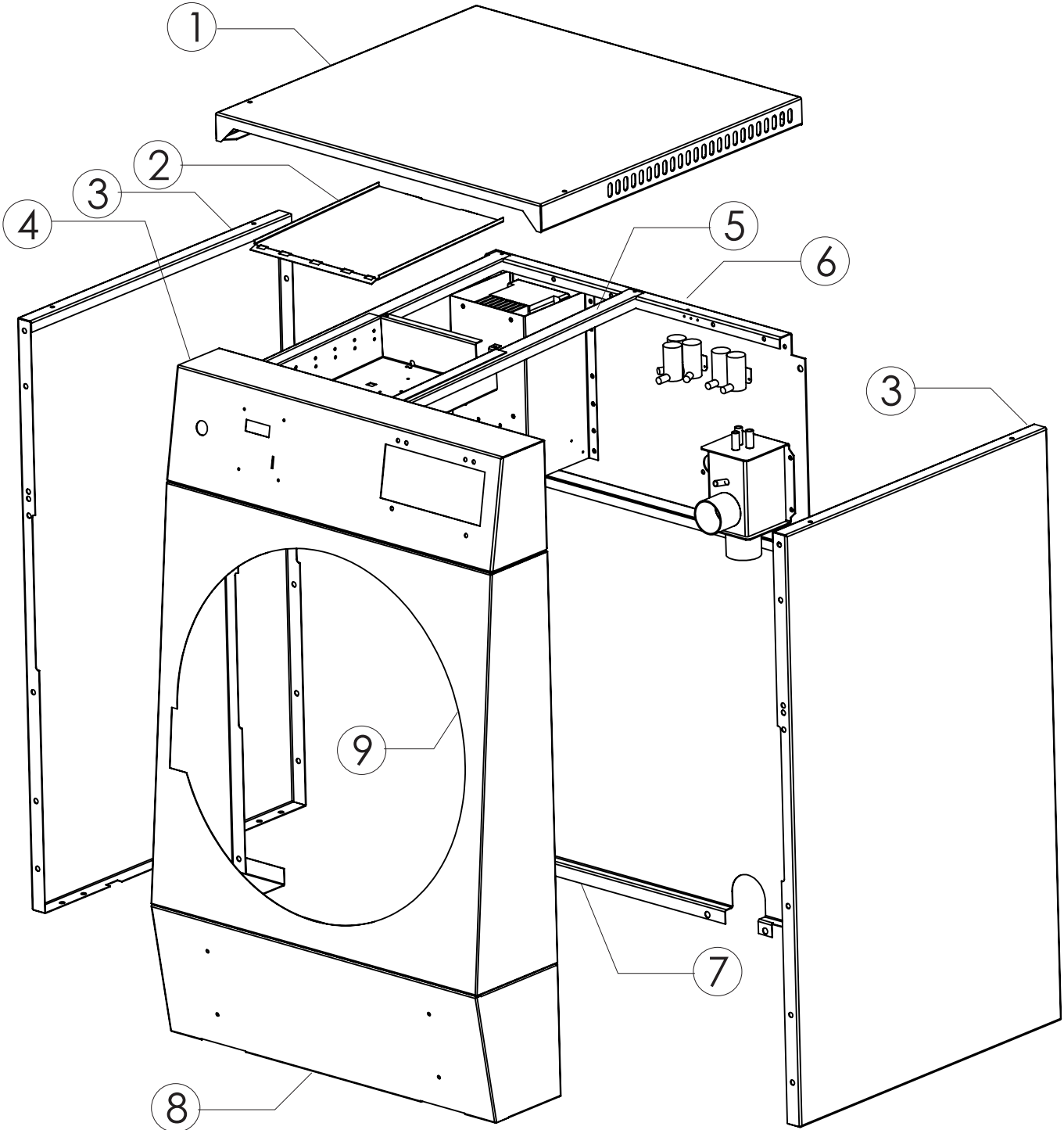
# Rear Control Enclosure



# Rear Control Enclosure

ITEM NO.	QTY	PART NUMBER					DESCRIPTION
		HE-30/35	HE-40/45	HE-60/65	HE-80/85	HE-100/110	
1	1	600-419	600-419	600-068	600-217	600-217	Rear Electrical Enclosure
2	1	331-000	331-000	331-000	331-052	331-052	Contactor, Electric Heat
3	1	432-500	432-500	432-500	432-500	432-500	DIN-rail, 110 mm
4	1	140-007	140-007	140-007	140-007	140-007	Terminal Block, Power
5	1	140-734	140-734	140-734	140-734	140-734	Ground Lug
6	2	350-210	350-210	350-210	350-210	350-210	Circuit Breaker, 2A (200V Only)
7	1	140-006	140-006	140-006	140-006	140-006	Terminal Block, 10 Pole
8	1	370-028	370-031	370-034	370-039	370-039	Inverter, Delta, 200V, 1phase
		370-029	370-032	370-035			Inverter, Delta, 200V, 3phase
		371-028	371-031	371-034	371-039	371-039	Inverter, Fuji, 200V, 1phase
		371-029	371-032	371-035			Inverter, Fuji, 200V, 3phase
		370-030	370-033	370-036	370-040	370-040	Inverter, Delta, 400V, 3phase
		371-030	371-033	371-036	371-040	371-040	Inverter, Fuji, 400V, 3phase
9	1	340-016	340-016	340-016	340-016	340-016	BREAKER,2A,2POLE (400V Only)
10	1	360-150	360-150	360-150	360-150	360-150	Transformer, 150VA
		360-075	360-075	360-075			Transformer, 75VA
11	1	370-062	370-062	370-062	370-017	370-017	EMI Filter
12	1	350-001	350-001	350-001	350-001	350-001	Circuit Breaker, 6A (150VA Transformer)
		350-211	350-211	350-211	350-211	350-211	Circuit Breaker, 3A (75VA Transformer)
13	1	370-310	370-310	370-310	370-310	370-310	Bridge Rectifier
14	1	110-001	110-001	110-001	110-001	110-001	Fan
15	1	HAM-900	HAM-900	HAM-900	HAM-900	HAM-900	Fan Guard, Retainer, Filter
16	1	600-455	600-455	600-081	600-081	600-081	Rear Electrical Cover

# Cabinet Assembly

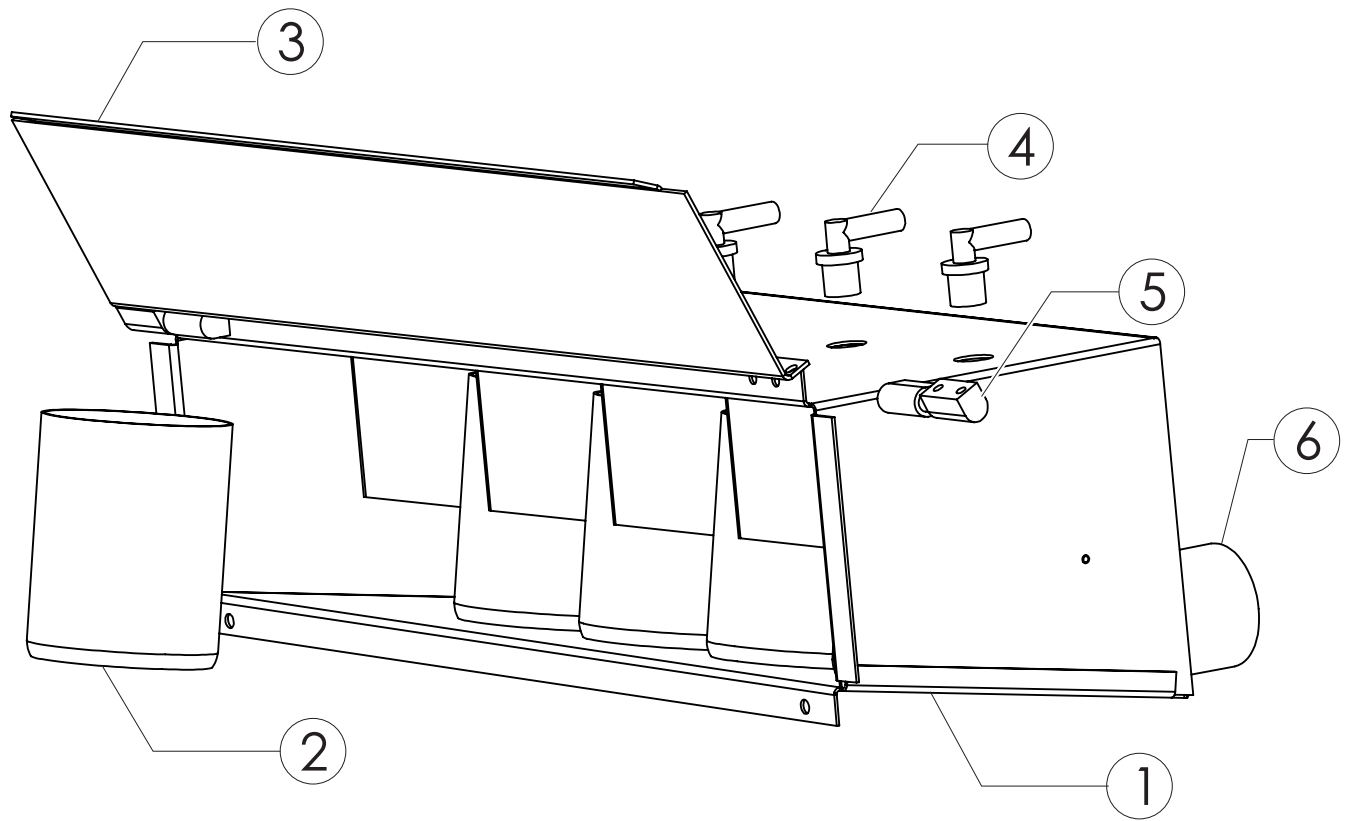




# Cabinet Assembly

ITEM NO.	QTY	PART NUMBER					DESCRIPTION
		HE-30/35	HE-40/45	HE-60/65	HE-80/85	HE-100/110	
1	1	600-425	600-778	600-334	600-734	601-050	Top Cover
2	1	600-221	600-221	600-221	600-221	600-221	Electrical Panel Cover
3	2	600-447	600-774	600-333	600-730	601-046	Side Panel
4	1	600-446	600-775	600-335	600-731	600-731	Control Panel
5	2	600-407	600-779	600-329	600-737	601-049	Cabinet Brace
6	1	600-413	600-783	600-331	600-747	600-747	Valve Panel
7	1	600-411	600-780	600-336	600-735	600-735	Rear Cover
8	1	600-412	600-777	600-332	600-733	600-733	Lower Front Panel
9	1	600-452	600-776	600-330	600-732	600-732	Middle Front Panel

# Supply Dispenser



# Supply Dispenser

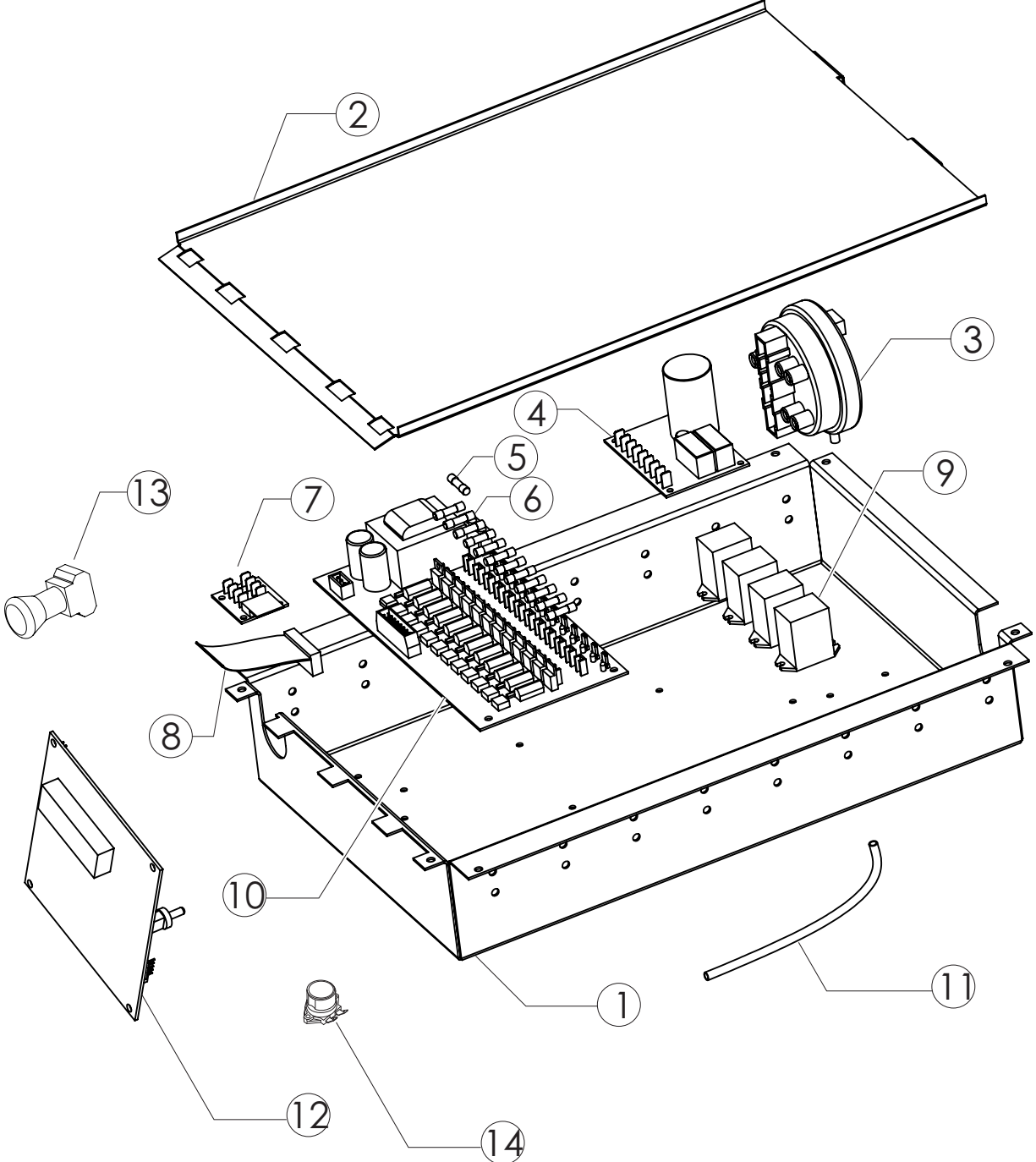
## Stainless Steel

ITEM NO.	QTY	PART NUMBER		DESCRIPTION
		HE-30/35/40/45	HE-60 and larger	
1	1	600-396	600-893	Supply Dispenser Body
2	4	150-010	150-001	Cup, Supply Dispenser
3	1	600-429	600-352	Supply Dispenser Cover
4	4	422-999	422-999	Flush Nozzle
5	2	432-007	432-007	Hinge, Liftoff
6	1	150-400	150-400	Chemical Hose
Not Shown	1	432-008	432-008	Knob, Dispenser Lid

## Polypropylene (HE-60 and larger)

ITEM NO.	QTY	PART NUMBER	DESCRIPTION
1	1	150-024	DISPENSER, 4 CUP POLY
2	4	150-021	Cup, Supply Dispenser
3	1	150-027	LID, DISPENSER, 4 CUP
6	1	150-400	Chemical Hose
Not Shown	4	150-022	Bushing, Dispenser Mounting

# Control Enclosure



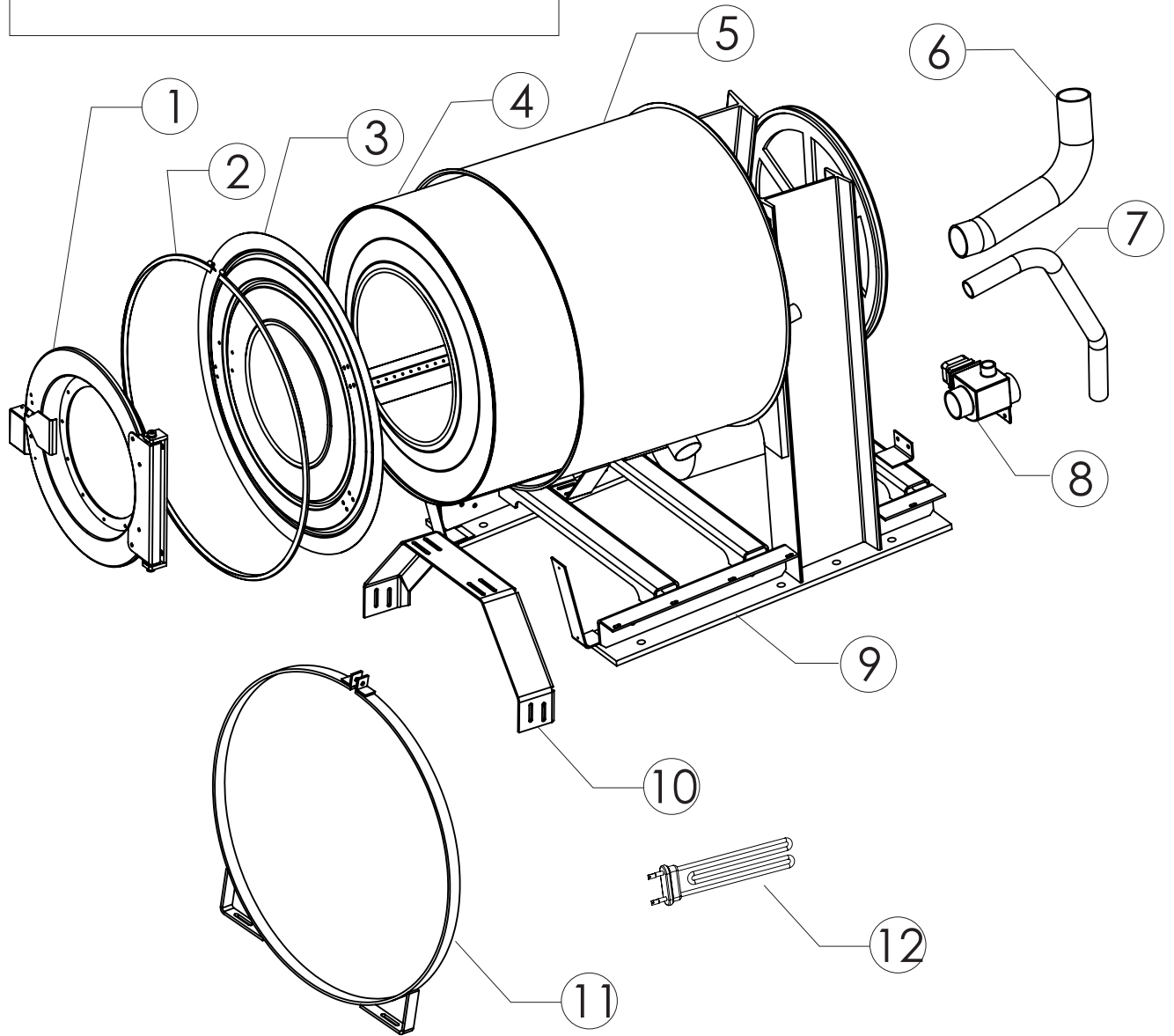
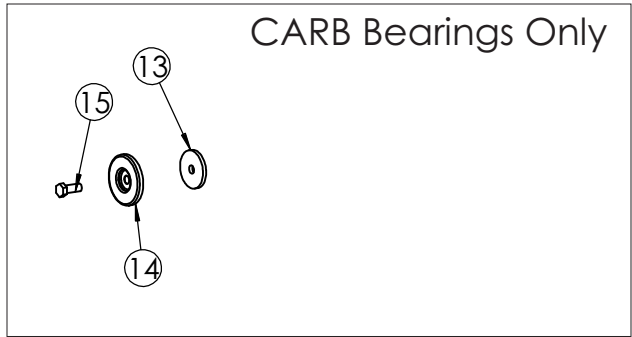
# Control Enclosure

ITEM NO.	QTY	PART NUMBER					DESCRIPTION
		HE-30/35	HE-40/45	HE-60/65	HE-80/85	HE-100/110	
1	1	600-092	600-092	600-092	600-092	600-092	CONTROL ENCLOSURE
2	1	600-221	600-221	600-221	600-221	600-221	CONTROL PANEL COVER
3	1	340-315	340-321	340-321	340-317	340-317	Level Switch
4	1	370-501	370-501	370-501	370-501	370-501	Door Lock Board
5	1	350-003	350-003	350-003	350-003	350-003	Fuse, 125mA
6	12	<b>SEE CHART</b>					Fuse - See Chart
		370-500	370-500	370-500	370-500	370-500	B-Comp Interface Board
7	1	371-500	371-500	371-500	371-500	371-500	A-Comp Interface Board
8	1	140-218	140-218	140-218	140-218	140-218	Ribbon Cable
9	4	330-252	330-252	330-252	330-252	330-252	Relay
		370-554-24	370-554-24	370-554-24	370-554-24	370-554-24	B-Comp Output Board
10	1	371-554	371-554	371-554	371-554	371-554	A-Comp Output Board
11	1	200-142	200-142	200-142	200-142	200-142	Air Trap Tube
		370-555-24	370-555-24	370-555-24	370-555-24	370-555-24	B-Computer
12	1	371-555	371-555	371-555	371-555	371-555	A-Computer
13	1	340-701	340-701	340-701	340-701	340-701	Emergency Stop Button
14	1	340-012	340-012	340-012	340-012	340-012	Balance Switch

## Fuse Chart

CHANNEL	QTY	PART NUMBER					DESCRIPTION
		HE-30/35	HE-40/45	HE-60/65	HE-80/85	HE-100/110	
SP	1	350-109	350-109	350-109	350-109	350-109	SPIN FUSE (500mA)
RV	1	350-109	350-109	350-109	350-109	350-109	REVERSE FUSE (500mA)
FW	1	350-109	350-109	350-109	350-109	350-109	FORWARD FUSE (500mA)
DN	1	350-117	350-117	350-117	350-117	350-117	DRAIN FUSE (2A)
S2	1	350-109	350-109	350-109	350-109	350-109	SUPPLY 2 FUSE (500mA)
S1	1	350-109	350-109	350-109	350-109	350-109	SUPPLY 1 FUSE (500mA)
HF	1	350-109	350-109	350-109	350-135	350-135	HOT FILL FUSE (500mA/1A HE-80 up)
CF	1	350-109	350-109	350-109	350-135	350-135	COLD FILL FUSE (500mA/1A HE-80 up)
HT	1	350-109	350-109	350-109	350-109	350-109	AUX HEAT FUSE (500mA)
DR	1	350-117	350-117	350-117	350-117	350-117	DOOR FUSE (2A)
S4	1	350-109	350-109	350-109	350-109	350-109	SUPPLY 4 FUSE (500mA)
S3	1	350-109	350-109	350-109	350-109	350-109	SUPPLY 3 FUSE (500mA)

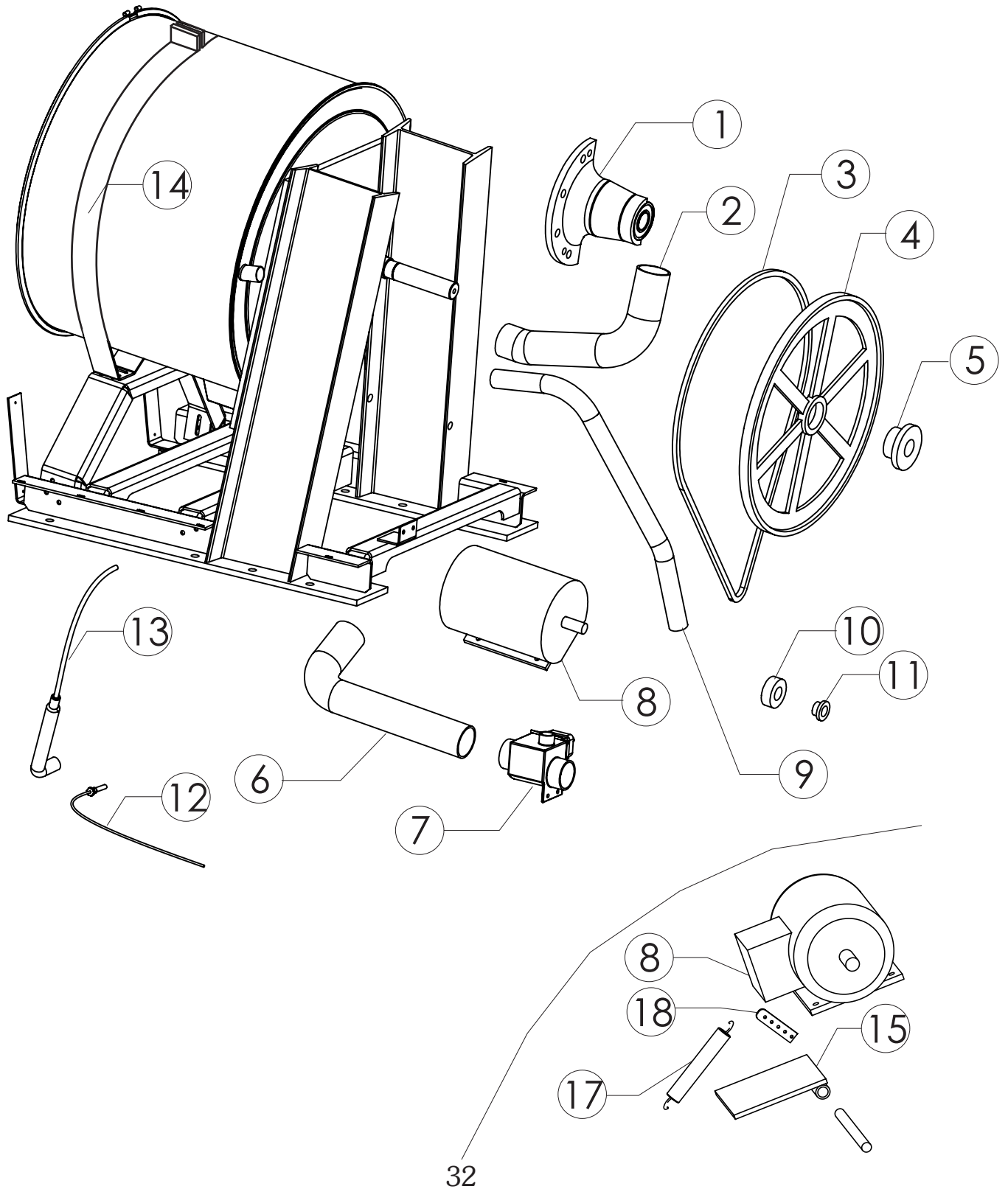
# Main Assembly, Front



# Main Assembly, Front

ITEM NO.	QTY	PART NUMBER					DESCRIPTION
		HE-30/35	HE-40/45	HE-60/65	HE-80/85	HE-100/110	
1	1	<b>See pages 8-15 for door detail</b>					Door Assembly
2	1	600-444	600-767	600-361	600-899	600-899	Shell Band
3	1	600-399	600-769	600-324	600-707	600-707	Shell Front
4	1	600-388	600-748	600-305	600-490	601-048	Wash Cylinder
					600-021		
5	1	600-389	600-765	600-308	600-706	601-047	Shell Wrap Weldment
6	1	150-013	150-017	150-002	150-002	150-002	Fill Hose
7	1	150-012	150-012	150-029	150-031	150-031	Overflow Hose
8	1	DOD-620	DOD-620	380-026	380-026	380-026	Drain Valve
9	1	600-392	600-772	600-300	600-497	600-497	Frame Weldment
10	1	600-441	600-894	600-326	600-895	600-895	Shell Support Bracket
11	1	600-896	600-897	600-898	600-752	600-752	Shell Saddle Weldment
12	3/6/9	SAC-205	SAC-205	SAC-205	SAC-205	SAC-205	Heating Element
13	1			600-022	600-022	600-022	Cylinder Washer
14	1			600-191	600-191	600-191	Cylinder Washer Cover
15	1			430-021	430-021	430-021	Bolt

# Main Assembly, Rear

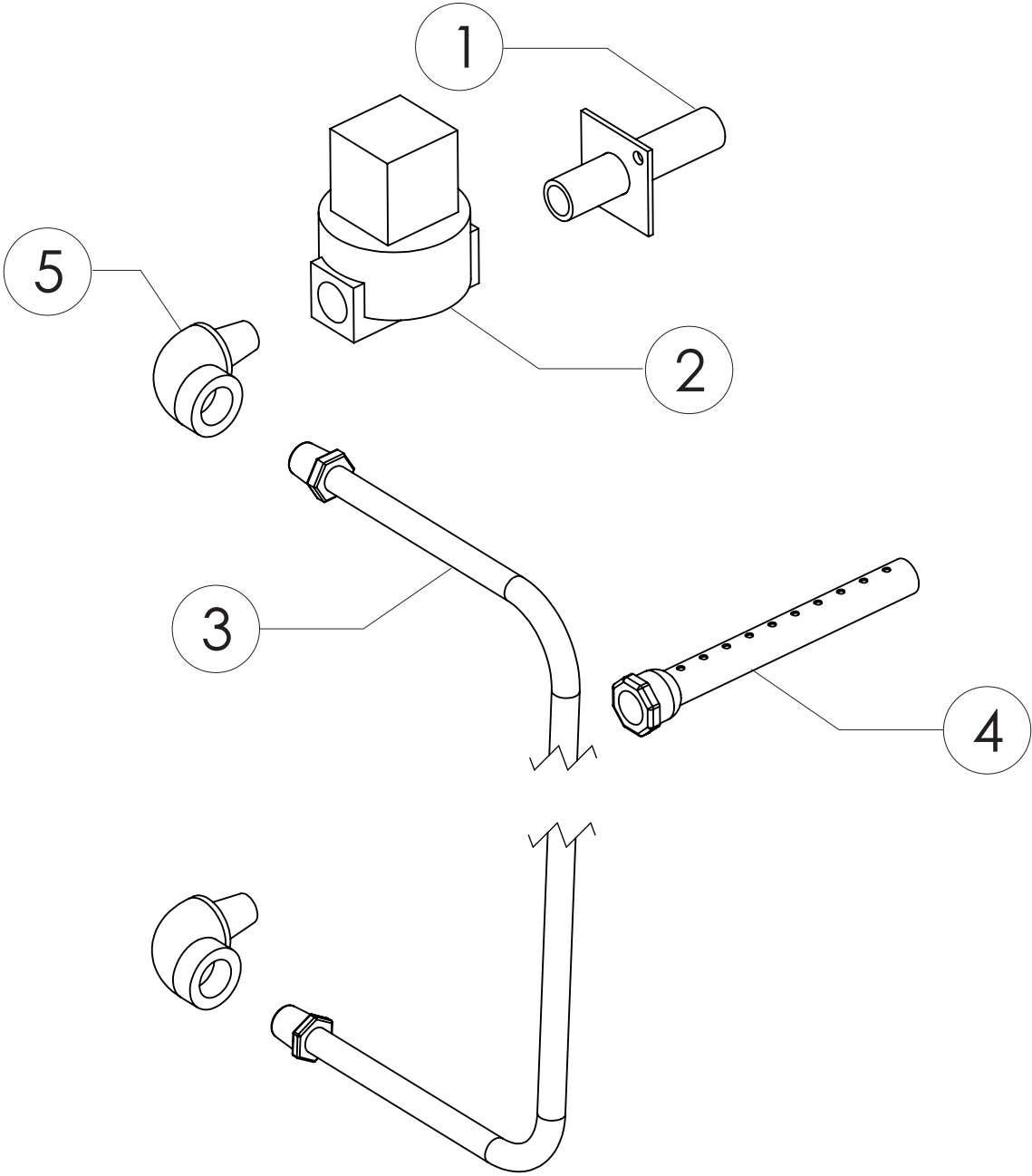




# Main Assembly, Rear

ITEM NO.	QTY	PART NUMBER					DESCRIPTION
		HE-30/35	HE-40/45	HE-60/65	HE-80/85	HE-100/110	
1		<b>See pages 36-41 for details</b>					Bearing Housing Assembly
2	1	150-013	150-017	150-002	150-002	150-002	Fill Hose
3	2	280-407	280-343	280-327	280-359	280-359	Belt
4	1	280-014	280-008	280-008	280-105	280-105	Cylinder Pulley
5	1	280-107	280-132	280-132	280-106	280-106	Cylinder Bushing
6	1	150-011	150-011	150-399	150-399	150-399	Drain Hose
7	1	DOD-620	DOD-620	380-026	380-026	380-026	Drain Valve
8	1	220-005	220-004	220-002	220-006	220-006	Motor
9	1	150-012	150-012	150-029	150-031	150-031	Overflow Hose
10	1	280-015	280-007	280-007	280-031	280-031	Motor Pulley
11	1	280-016	280-006	280-006	280-032	280-032	Motor Bushing
12	1	UEC-606	UEC-606	UEC-606	UEC-606	UEC-606	B-Computer Temp Probe
		371-606	371-606	371-606	371-606	371-606	A-Computer Temp Probe
13	1	200-142	200-142	200-142	200-142	200-142	Level Tube
14	1	600-896	600-897	600-898	600-752	600-752	Shell Saddle Weldment
15	1	601-026	601-027	601-028			Motor Mounting Plate, w/ rod
17	1	430-037	430-037	430-037			Motor Tensioning Spring
18	1	601-029	601-029	601-030			Motor Tensioning Spring Bracket

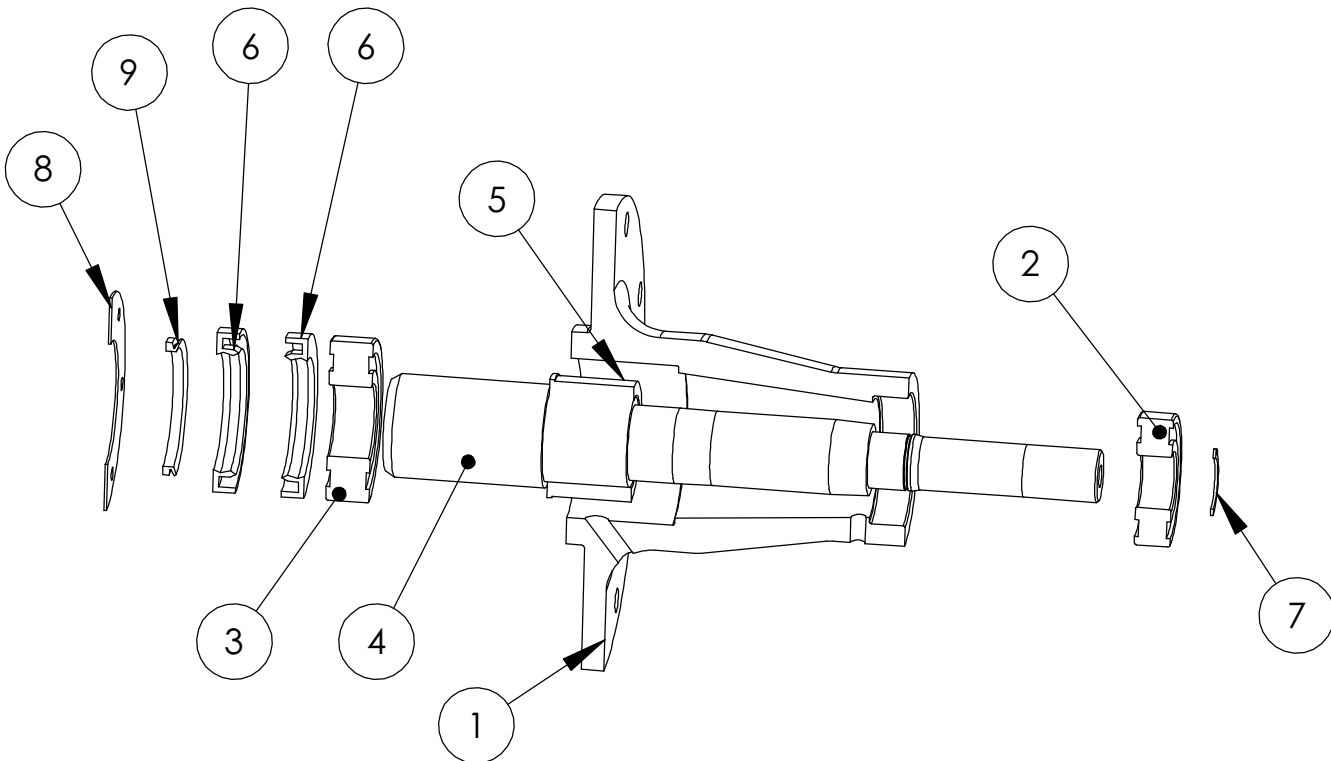
# Steam Injection Assembly



# Steam Injection Assembly

ITEM NO.	QTY	PART NUMBER					DESCRIPTION
		HE-30/35	HE-40/45	HE-60/65	HE-80/85	HE-100/110	
1	1	200-811	200-811	200-811	600-877	600-877	STEAM INLET
2	1	381-708	381-708	381-708	381-709	381-709	STEAM VALVE
3	1	200-805	200-805	200-805	200-804	200-804	STEAM HOSE
4	1	200-806	200-806	200-806	200-807	200-807	STEAM INJECTOR
5	1	420-031	420-031	420-031	420-012	420-012	STREET ELBOW
Not Shown	1	PAR-984	PAR-984	PAR-984	PAR-985	PAR-985	REPAIR KIT FOR STEAM VALVE

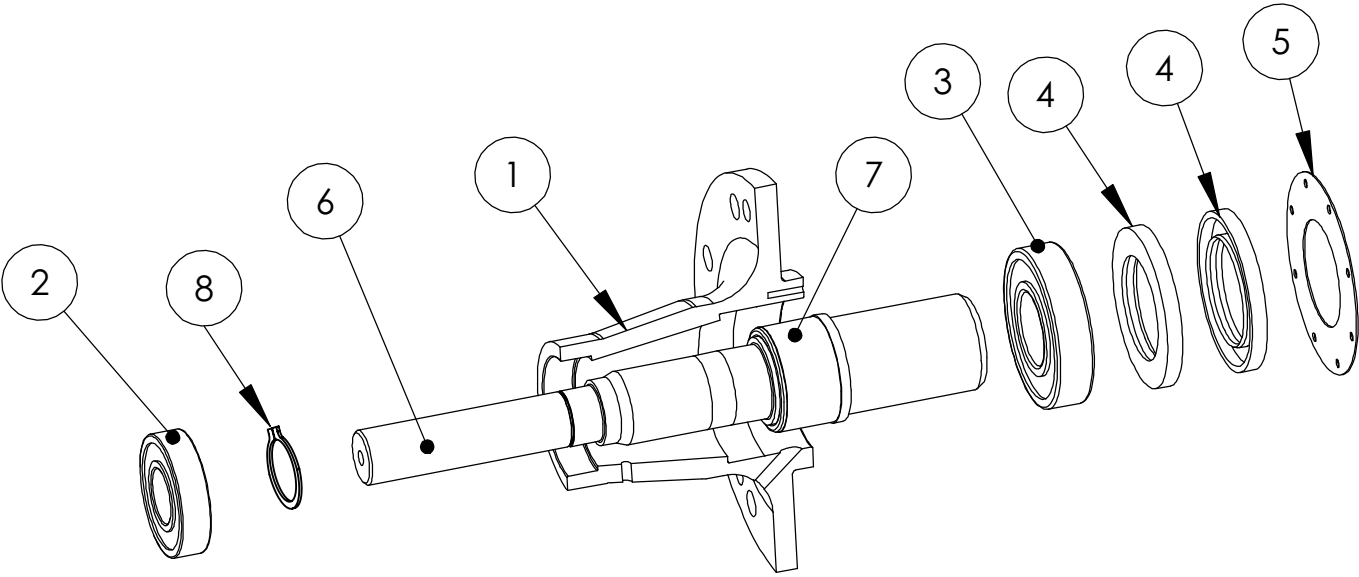
# HE-30 Bearing Assembly



# HE-30/35 Bearing Assembly

Item	Qty	Part Number	Description
		HE-30/35	
		600-391	Bearing Housing Assembly
1	1	600-390	Bearing Housing
2	1	SKF-030	Bearing, Rear
3	1	SKF-137	Bearing, Front
4	2	600-394	Shaft
5	1	600-395	Shaft Collar
6	2	100-020	Seal
7	1	420-019	Retaining Ring
8	1	600-443	Seal Plate
9	1	100-021	Seal, V-Ring

# HE-40/45/60/65 Bearing Assembly

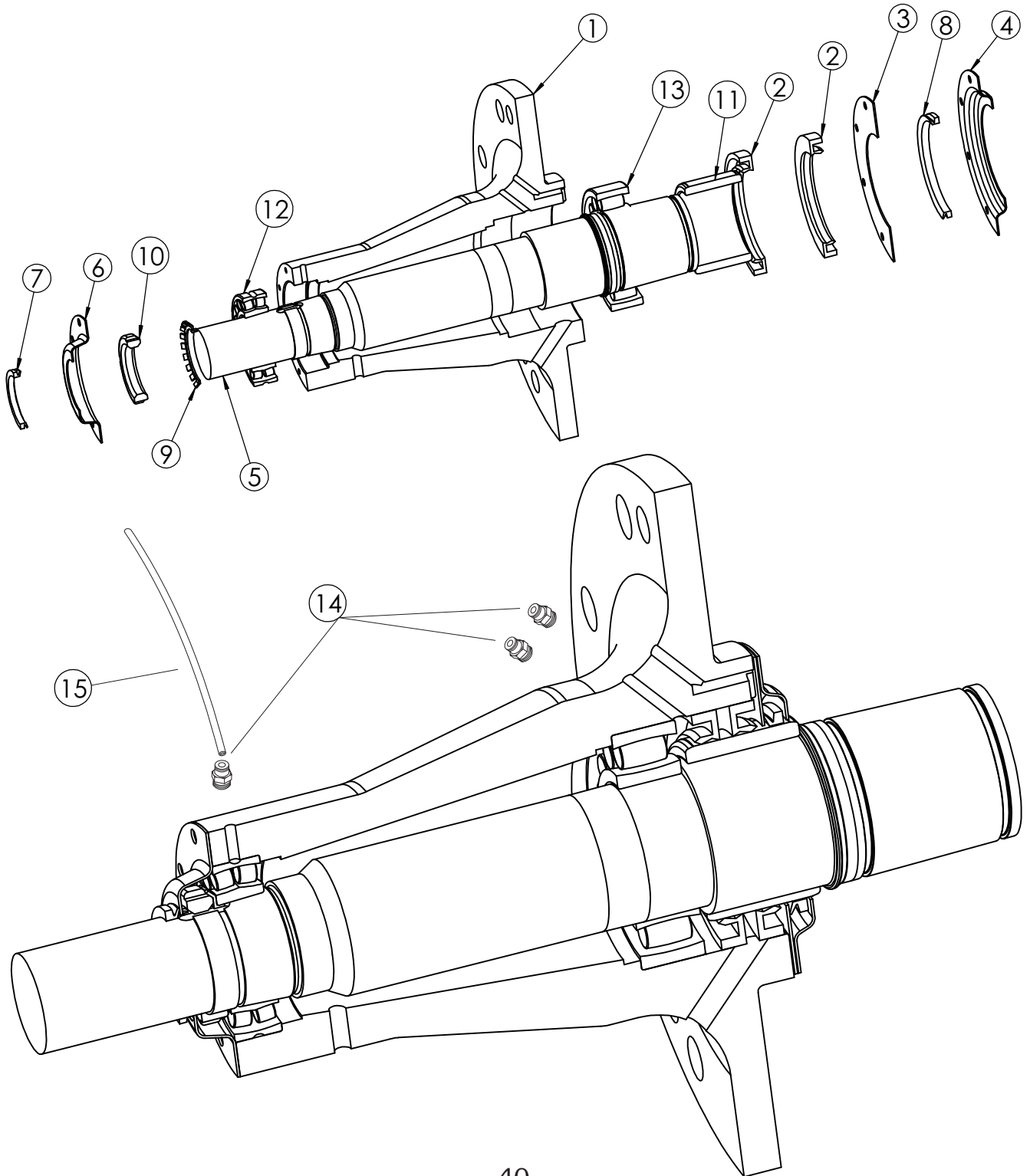


# HE-40/45/60/65 Bearing Assembly

Item	Qty	Part Number	Description
		HE-40/45/60/65	
		600-318	Bearing Housing Assembly
1	1	600-315	Bearing Housing
2	1	SKF-123	Bearing, Rear
3	1	SKF-122	Bearing, Front
4	2	100-008	Seal
5	1	600-320	Seal Plate
6	1	600-316	Shaft
7	1	600-317	Shaft Collar
8	1	430-010	Retaining Ring

# HE-60/65 Bearing Assembly

With CARB Bearings



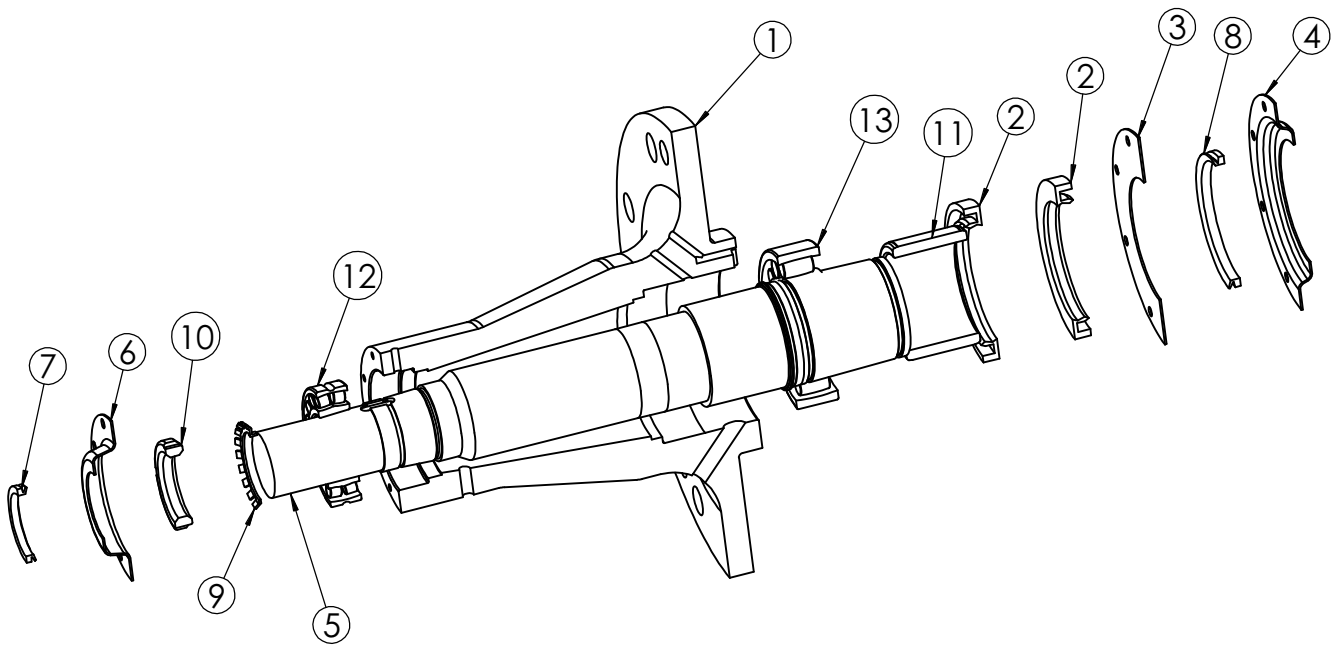


# HE-60/65 Bearing Assembly

With CARB Bearings

ITEM NO.	QTY.	PART NUMBER	DESCRIPTION
		601-016	Assembly, Bearing Housing
1	1	601-015	Bearing Housing
2	2	100-030	Seal
3	1	600-025	Seal Plate, Flat
4	1	600-024	Seal Plate, Front
5	1	601-014	Shaft
6	1	600-026	Seal Plate, Rear
7	1	100-002	Seal, V-Ring
8	1	100-003	Seal, V-Ring
9	1	100-035	Washer, Bearing
10	1	100-034	Nut, Bearing
11	1	600-019	Shaft Collar
12	1	100-032	Rear Bearing (Outboard)
13	1	100-033	Front Bearing (Inboard)
14	3	420-027	Lubrication Line Fitting
15	8	200-191	Lubrication Line

# HE-80/85/100/110 Bearing Assembly



# HE-80/85/100/110 Bearing Assembly

ITEM NO.	QTY	PART NUMBER	DESCRIPTION
		600-874	Bearing Housing Assembly
1	1	600-013	Bearing Housing
2	2	100-030	Seal
3	1	600-025	Seal Plate, Flat
4	1	600-024	Seal Plate, Front
5	1	600-031	Shaft
6	1	600-026	Seal Plate, Rear
7	1	100-002	Seal, V-Ring
8	1	100-003	Seal, V-Ring
9	1	100-035	Washer, Bearing
10	1	100-034	Nut, Bearing
11	1	600-019	Shaft Collar
12	1	100-032	Rear Bearing
13	1	100-033	Front Bearing
Not Shown	2	170-207	Shaft/Cylinder O-Ring



More information is available on our website:  
[www.bandctech.com](http://www.bandctech.com)

©2013, B&C Technologies, LLC  
All Rights Reserved

---